

G-FORCE T-5

please call for pricing, 717.202.8367

Synchronized Gear Kit

(you build it using your transmission)

The Helical Synchronized kit includes 1st, 2nd, 3rd main shaft gears, 26 spline input shaft with input drive gear (4th) complete cluster shaft with gears 1st, 2nd, 3rd, and cluster drive gear (4th).

2.95 Helical Synchronized



Dog Ring Gear Kit

(you build it using your transmission)

Dog Ring kits are available with helical or spur cut gears. The kit includes 1st, 2nd & 3rd main shaft gears, 26 spline input shaft with input drive gear (4th), complete cluster shaft with gears 1st, 2nd, 3rd, and cluster drive gear (4th), 1/2 and 3/4 9310 sliders with hubs and bronze aluminum shift forks for 1/2 and 3/4.

2.92 or 3.22 Helical Dog Ring

2.46 Spur Dog Ring

2.95 or 3.22 Spur Dog Ring (While Supplies Last)



Complete Transmission Prices *(stock M/S & O/D)T*

TBA Shipping within continental U.S. (will ship world wide)

New T-5 with synchro gear kit installed

Re-manufactured T-5 with a dog ring gear kit installed

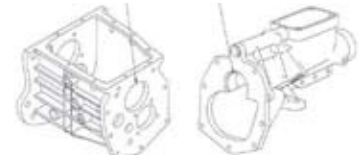
New T-5 with a dog ring gear kit installed

Over Drives

***GFT90 — .90 over drive gear kit
(requires case modification)
Includes: spur dog ring gear set, bearings,
fork & slider w/ hub***



***GFT90S — .90 over drive gear kit
(requires case modification)
Includes: synchro gear set, bearings & fork***



See last page for exploded view

***GFT75 — .75 over drive gear kit
(available synchronized only)
Includes: gear set only***



G-Force Racing Transmissions
150 N. Grant Street
Cleona, PA 17042
(717) 202.8367 / Fax (717) 202.8373
www.gforcetransmissions.com






Long Shifters
150 N. Grant Street
Cleona, PA 17042
(717) 202.8374 / Fax (717) 202.8372
www.longshifters.com

G-FORCE T-5 (Continued)

Main Shafts (suggested for 400 + hp applications) Not included with Gear Kits.

	<p>9310 Case Hard High Nickel Steel Alloy GFT5025-2 – 1pc. Dog Ring GFT5022-2 – 2pc. Synchronized</p>	
	<p>4340 thru Hard Premium Alloy GFT5025-1 – 1pc. Dog Ring GFT5022-1 – 2pc. Synchronized</p>	

Shifter Parts

	<p>1/2 fork GFT5041 (included with dog ring gear kit)</p>	
	<p>3/4 fork GFT5042 (included with dog ring gear kit)</p>	
	<p>5th fork GFT5043 (included w/ .90 O/D gear kit, suggested in ALL applications)</p>	
<p>1/2 or 3/4 shift plate (synchronized) GFT5021-1</p>		
<p>1/2 shift plate (dog ring) GFT5021-2</p>		
<p>3/4 shift plate (dog ring) GFT5021-3</p>		
<p>Long shifter for Ford T-5 SR-4550</p>		
<p>Pro 5.0 shifter for Ford or GM T-5</p>		

Sliders

	<p>GFT507 – 1/2 (synchro)</p>	
	<p>GFT506 – 3/4 (synchro)</p>	
	<p>GFT5016 – 1/2 (dog ring) <i>(included with dog ring gear kit)</i></p>	
	<p>GFT5017 – 3/4 (dog ring) <i>(included with dog ring gear kit)</i></p>	



G-Force Racing Transmissions
 150 N. Grant Street
 Cleona, PA 17042
 (717) 202.8367 / Fax (717) 202.8373
www.gforcetransmissions.com



Long Shifters
 150 N. Grant Street
 Cleona, PA 17042
 (717) 202.8374 / Fax (717) 202.8372
www.longshifters.com

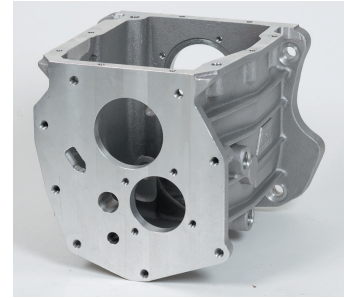
G-FORCE T-5 (Continued)

Main Case

GFT5072: Strengthened front and rear bearing bore areas for added support.
Case available with three different patterns: Ford T-5 or GM & Toploader

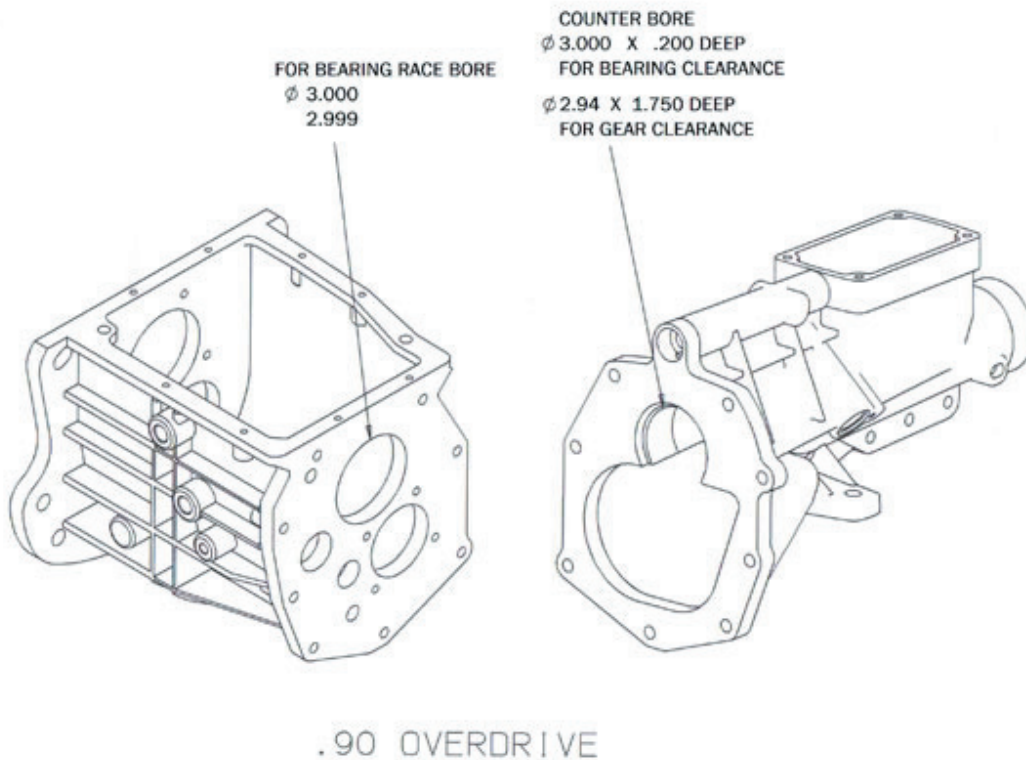
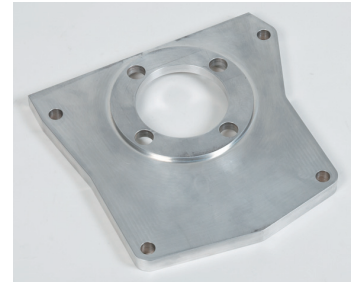
Steel bearing retainer - Ford or GM

GFT5026 – Cluster support plate, replaces stock plate for added strength
(suggested in ALL applications)



Mustang Adapter Plate

'94-'95 adapter plate—use Lakewood bell housing and stock drive shaft.



G-Force Racing Transmissions
 150 N. Grant Street
 Cleona, PA 17042
 (717) 202.8367 / Fax (717) 202.8373
www.gforcetransmissions.com



Long Shifters
 150 N. Grant Street
 Cleona, PA 17042
 (717) 202.8374 / Fax (717) 202.8372
www.longshifters.com